



TRUSTED BY THE TOUGHEST

New CitiMedic

Increased cab roof for both driver and passenger.

148-inch modular length.

90-inch modular width.

68-inch interior headroom.
Optional 72-inch.





Citimedic

8-inch cab extension.

Diamondplate compartments.

.090 Single Skins

Duraseam Doors.

Trimark Pull Handles



Citimedic





Citimedic

Coolbar is available.



WC Taillights

Under-Ride
Rear Bumper.



Citimedic

Compt #1 – Oxygen storage. Can accommodate 2 steel “M” cylinders.

Sweep-out floor.





Citimedic

Compt #2 – Open storage with fixed shelf.
Adjustable shelves available.
2-inch drop floor.

Compt #4 – Backboard / Stair Chair Storage.
4-inch drop floor.



Month, Day 00, 2019



Citimedic

Compt #6 – Spare Tire Storage.
Adjustable shelf available if tire storage not desired.



Citimedic

Compt #8 – Access to right front stack cabinet.

Compt #8.5 – Battery storage.



Citimedic

Comfort Per4Max attendant seat on
metal base.
Optional Swivel base available.

Walk-thru partition with sliding door.

3-inch roll up floor standard.



Citimedic

Combo HVAC unit on top of right front stack.

Dual one hand operation doors on right front stack.

Optional center slide-out drawer or safety net available.

Optional Norcold refrigerator / Engle cooler / Mermaid refrigerator available.



Citimedic

Streetside “Basewall” cabinet with optional CPR side seat.

Per4Max seat belt system.

Telemetry area rearward of CPR seat.

Both counter tops laminated. Optional polyurethane poured trays available.

Recessed suction container below action area.





Citimedic

Dual sitting position on curbside Squad Bench.

Per4Max seat belt system.

Sharps/Waste at head of bench.

5 Minute timer switch at head of bench.

O2 outlet at head of curbside wall.

Control switch panel at head of curbside wall.
Can be relocated to streetside action area if desired.



Citimedic

Storage cabinet inside curbside squad bench with 60 lb gas strut.

Additional restraints for 2nd patient transport.





Citimedic

Chevron on side and rear entry doors.

Stainless steel door panels.
Optional diamond plate available.

Yellow "L" handles on side and rear entry doors.
Optional stainless available.

Yellow overhead grabrail.
Optional stainless available.

Hinged wire trough overhead for easy access to electrical raceway.



Citimedic

Streetside cabinets:

U3.5 with top hinged door.

Telemetry area countertop.

L3.5 with drop down door.

U4 with dual one hand operation doors.



Citimedic

Streetside cabinet :

CPR side seat.

Per4Max seat belt system.

Storage area below seat cushion.

“U” Bar for additional safety.



Citimedic

Streetside cabinet:

U1 cabinet with hinged wood door. Inverter/charger stored in this location.

U2 cabinet with sliding polycarbonate self locking doors.

Action area countertop.

Recessed suction container below action area.

Oxygen view window.

Electrical panel access doors above walkthrough area.





Citimedic

Aluminum rubber coated floor console in cab.

Available with multiple panel options.

Blank / Cop Holder / Glove Storage / Radio Storage

Map storage

Optional dividers

Optional Armrest



Citimedic

- Laminated action area countertop.
- Optional polyurethane poured trays available.
- Recessed suction container below action area.



Citimedic

Electrical circuit board storage area.





Citimedic

Optional Backup Camera Available.





Citimedic

Optional Chassis Available:

Type 3

Ford E-350 Cutaway Gas Engine

Chevy G3500 Cutaway Gas Engine

Type 1

Ford F350 4x2 / 4x4 Diesel Engine

Dodge Ram 3500 4x2/4x4 Diesel Engine

Chevy Silverado 3500 4x2/4x4 Gas / Diesel Engine

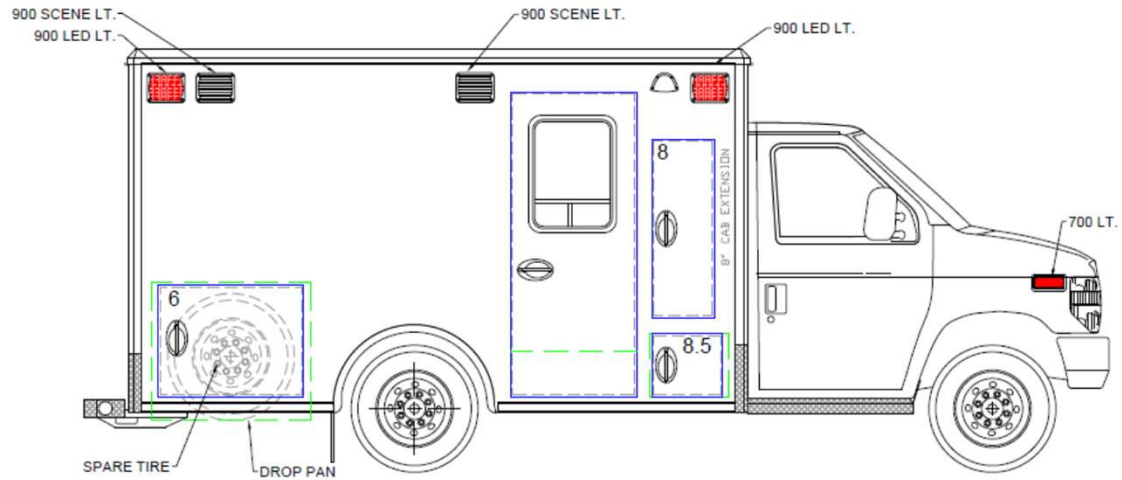


Citimedic

CA101242

MODEL 3148F CITIMEDIC

148 x 90 x 68



BE ADVISED THAT THESE ARE PRELIMINARY LAYOUTS INTENDED TO ILLUSTRATE DESIGN INTENT AND DIMENSIONS ARE FOR REFERENCE ONLY PRIOR TO FINAL ENGINEERING

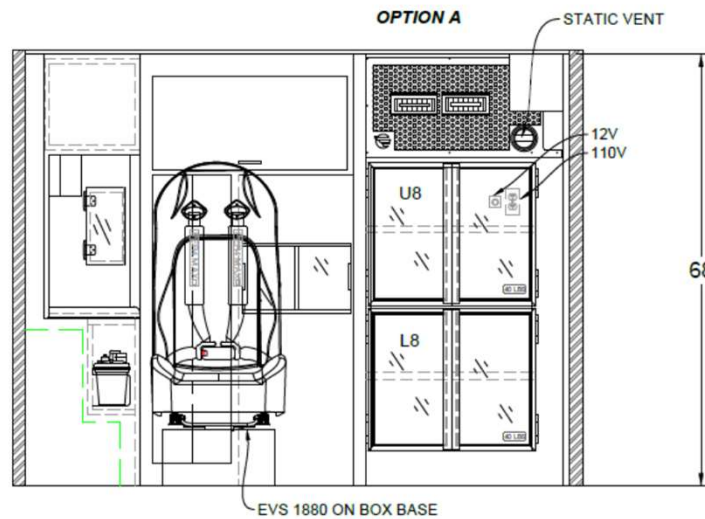
EXTERIOR COMPARTMENT DIMENSIONS IN INCHES													
INTERIOR DIMENSIONS				JAMB OPENING		INTERIOR DIMENSIONS				JAMB OPENING			
COMPT.	HEIGHT	WIDTH	DEPTH	HEIGHT	WIDTH	COMPT.	HEIGHT	WIDTH	DEPTH	HEIGHT	WIDTH	RIGHT EXT. VIEW	
8				42.75	14.75								
6	32.75	38.00	15.50	26.75	34.50								
8.5	15.50	19.00	18.50	15.00	16.75								
49" AISLE												DATE: 1/20/21	SCALE:
												DRAWN BY: AP	CHECKED: 3 / 11

Citimedic

CA101242

MODEL 3148F CITIMEDIC

148 x 90 x 68



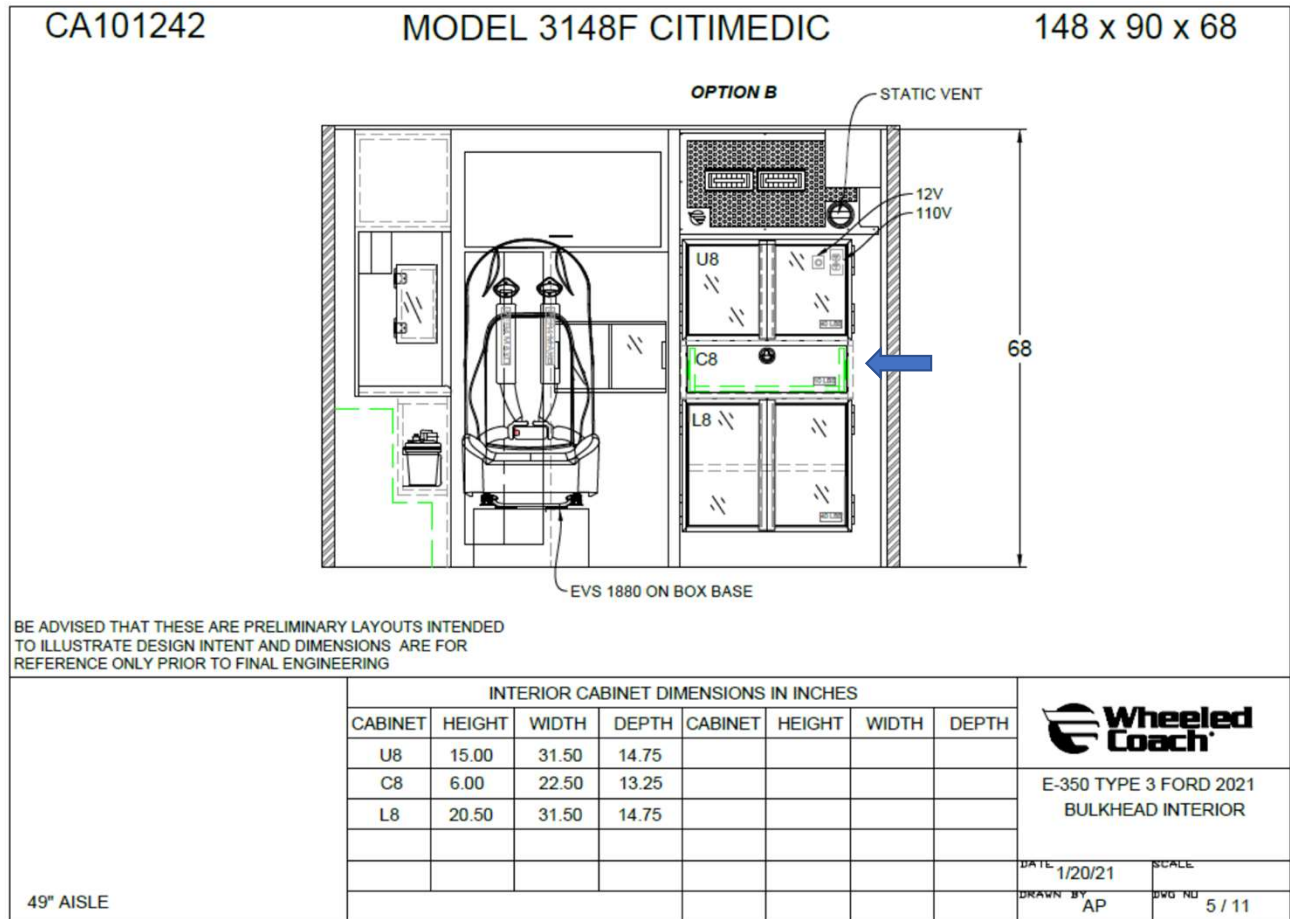
BE ADVISED THAT THESE ARE PRELIMINARY LAYOUTS INTENDED TO ILLUSTRATE DESIGN INTENT AND DIMENSIONS ARE FOR REFERENCE ONLY PRIOR TO FINAL ENGINEERING

INTERIOR CABINET DIMENSIONS IN INCHES								
CABINET	HEIGHT	WIDTH	DEPTH	CABINET	HEIGHT	WIDTH	DEPTH	
U8	22.50	31.50	14.75					E-350 TYPE 3 FORD 2021 BULKHEAD INTERIOR
L8	22.50	31.50	14.75					
								DATE: 1/20/21
								SCALE
								DRAWN BY: AP
								DWG NO: 4 / 11

49" AISLE

Citimedic

Dual OHO polycarbonate doors.
Center drawer (Opt.)



Citimedic

Cargo Net Optional.

CA101242 MODEL 3148F CITIMEDIC 148 x 90 x 68

OPTION C

STATIC VENT

12V
110V

U8

NET
(2) ADJ. SHELVES

68

EVS 1880 ON BOX BASE

BE ADVISED THAT THESE ARE PRELIMINARY LAYOUTS INTENDED TO ILLUSTRATE DESIGN INTENT AND DIMENSIONS ARE FOR REFERENCE ONLY PRIOR TO FINAL ENGINEERING

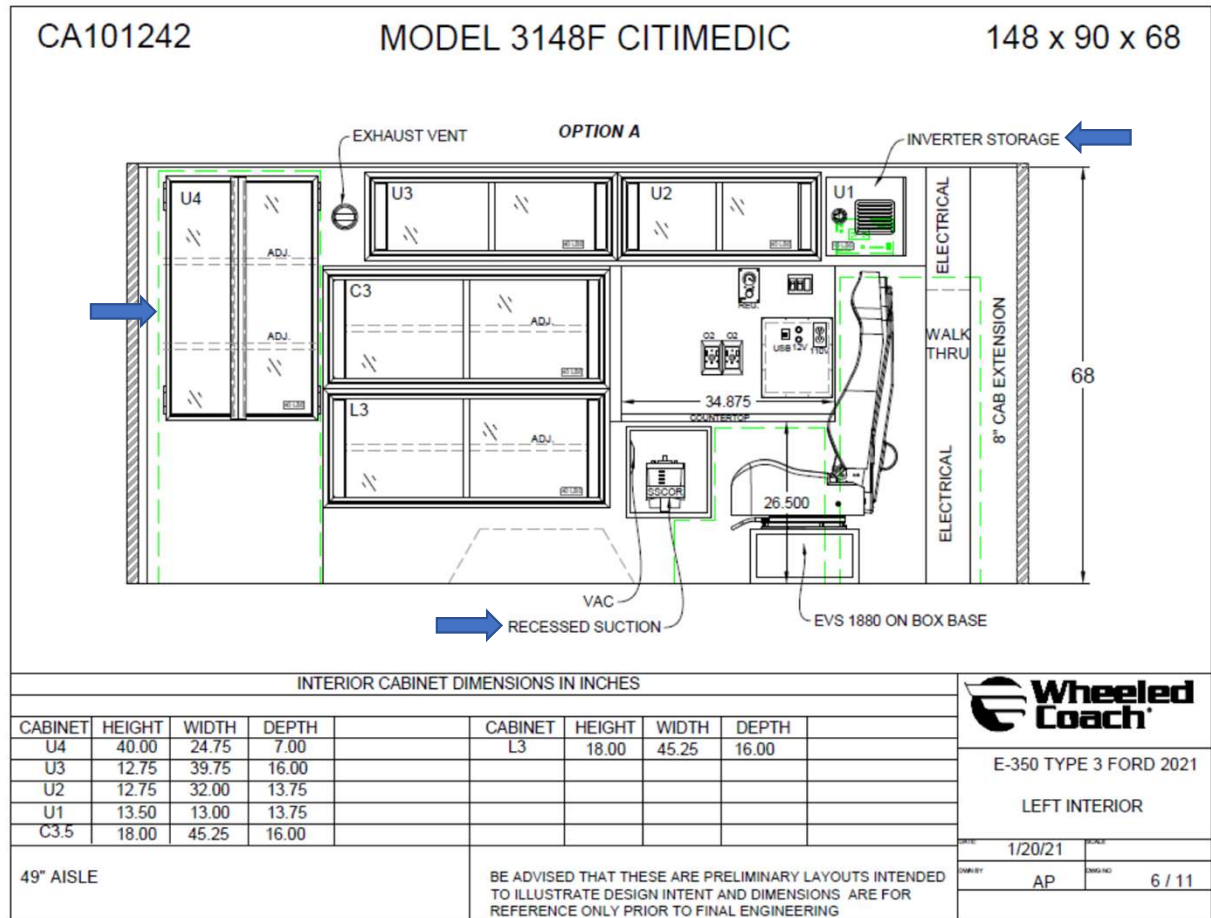
INTERIOR CABINET DIMENSIONS IN INCHES									
CABINET	HEIGHT	WIDTH	DEPTH	CABINET	HEIGHT	WIDTH	DEPTH		
U8	46.00	31.50	14.75					E-350 TYPE 3 FORD 2021 BULKHEAD INTERIOR	
49" AISLE								DATE: 1/20/21	SCALE:
								DRAWN BY: AP	DRG NO: 6 / 12

Citimedic

Dual OHO polycarbonate doors U4.

Inverter storage U1.

Recessed suction below action area.

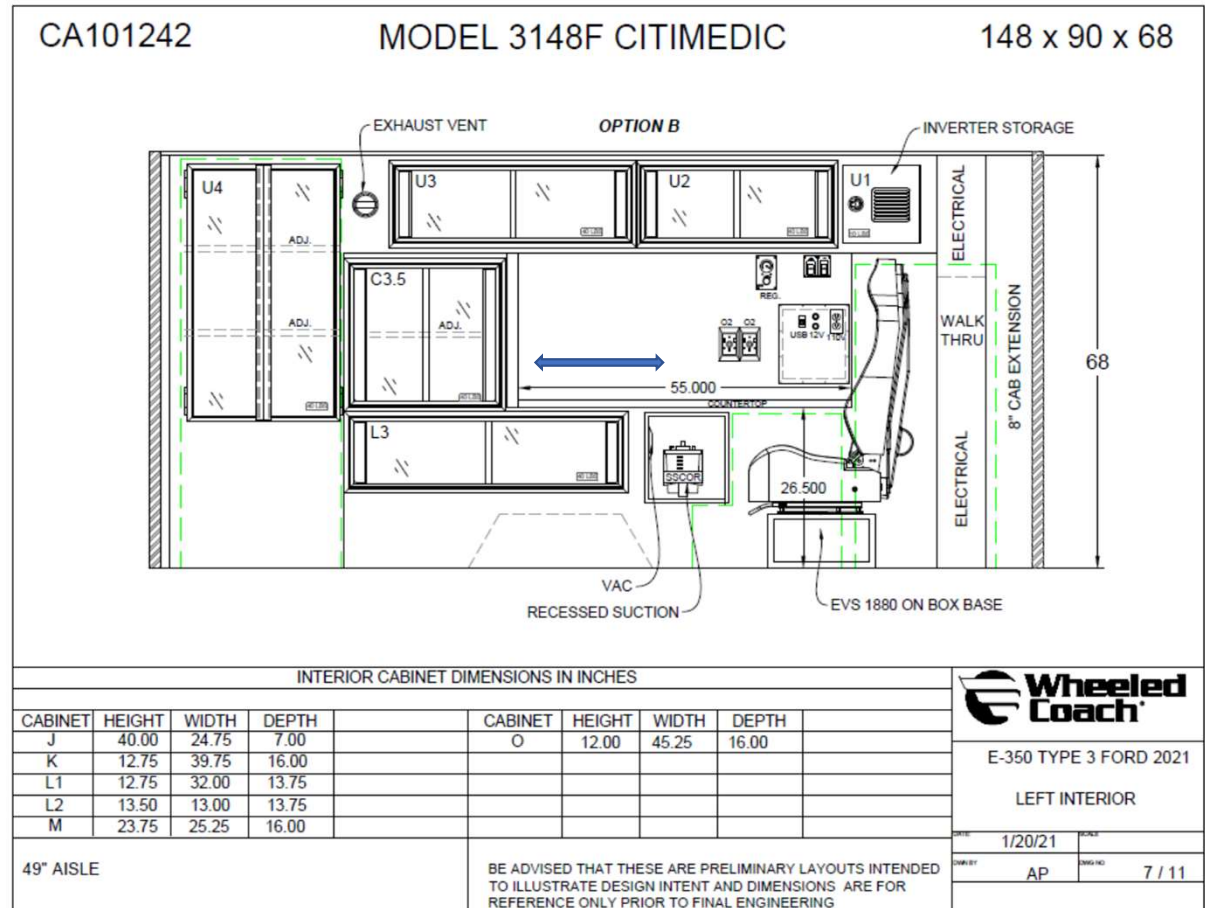


Citimedic

Extended action area (Opt.)

C3.5 Increased in height.

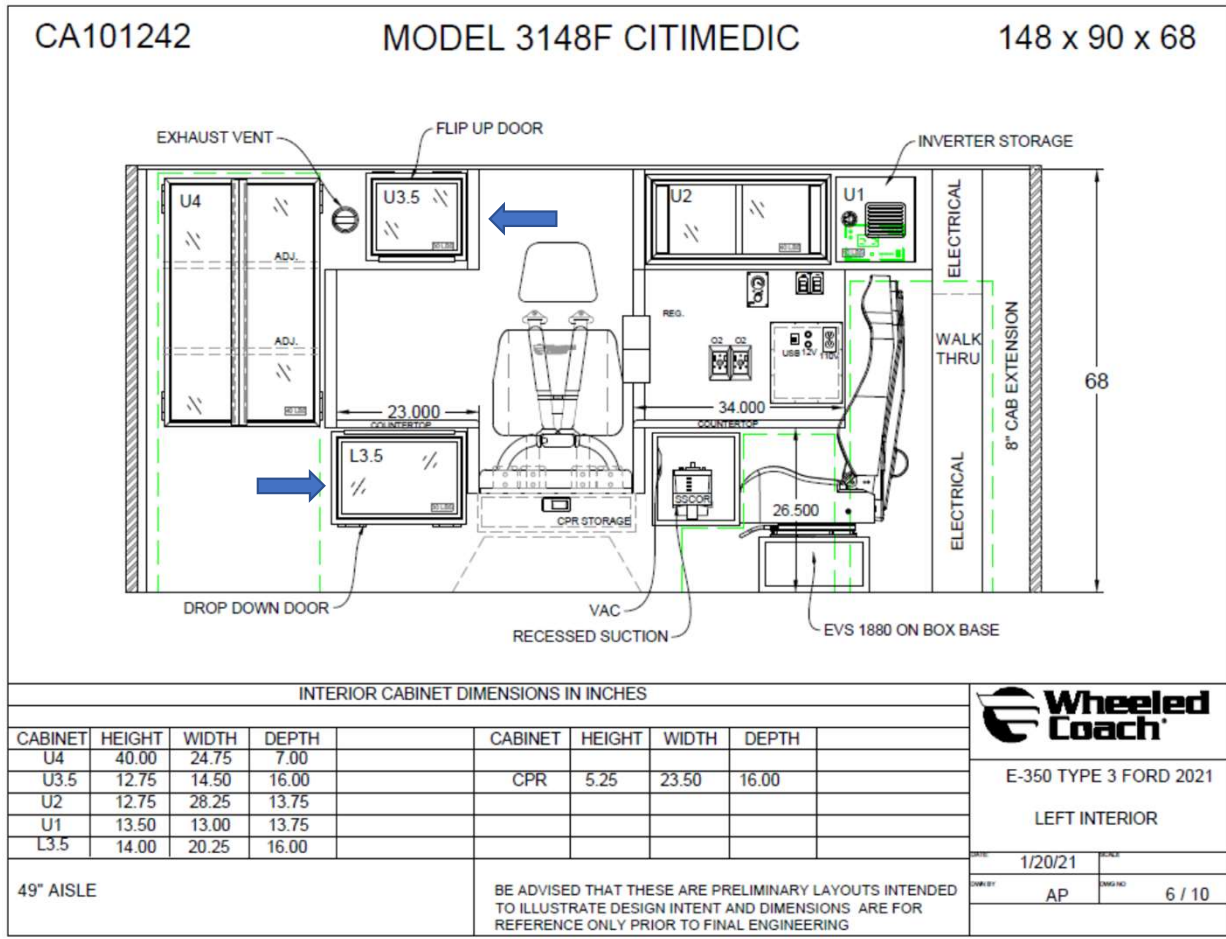
L3 Reduced in height.



Citimedic

Flip Up polycarbonate frame U3.5

Drop Down polycarbonate frame L3.5



Citimedic

Switch panel relocated to curbside at head of bench.

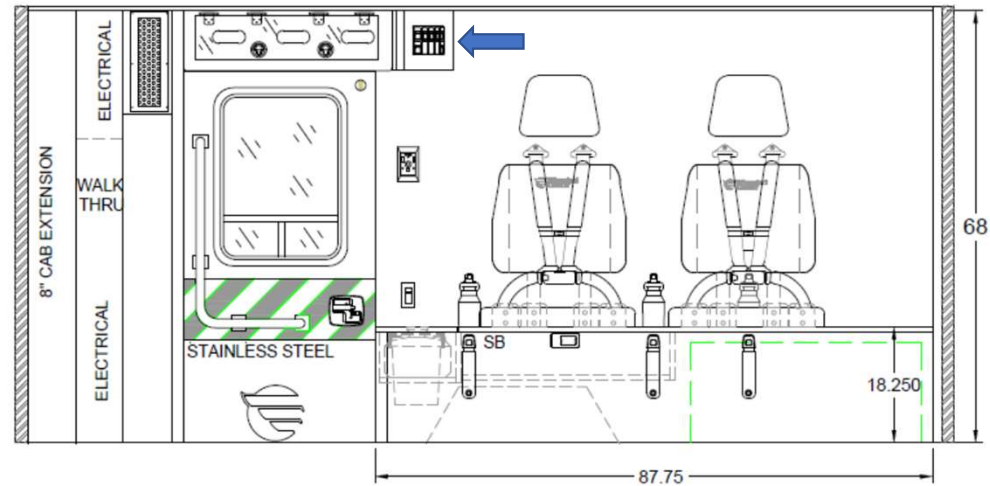
Attendant can remain seated and buckled safely while treating patient.

Per4Max 4-point safety harness system.

CA101242

MODEL 3148F CITIMEDIC

148 x 90 x 68



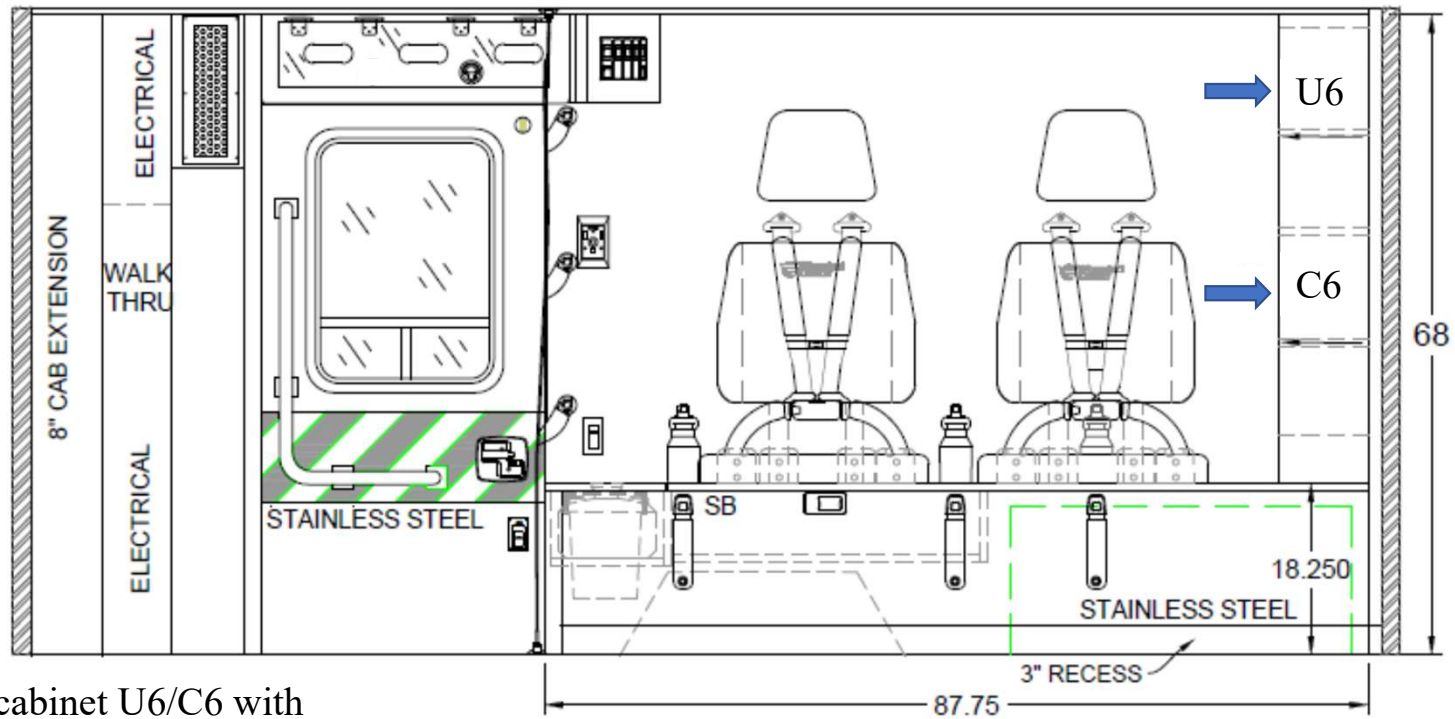
INTERIOR CABINET DIMENSIONS IN INCHES

COMPT.	HEIGHT	WIDTH	DEPTH	COMPT.	HEIGHT	WIDTH	DEPTH
SB	6.75	30.75	16.00				
49" AISLE				BE ADVISED THAT THESE ARE PRELIMINARY LAYOUTS INTENDED TO ILLUSTRATE DESIGN INTENT AND DIMENSIONS ARE FOR REFERENCE ONLY PRIOR TO FINAL ENGINEERING			

E-350 TYPE 3 FORD 2021
RIGHT INTERIOR

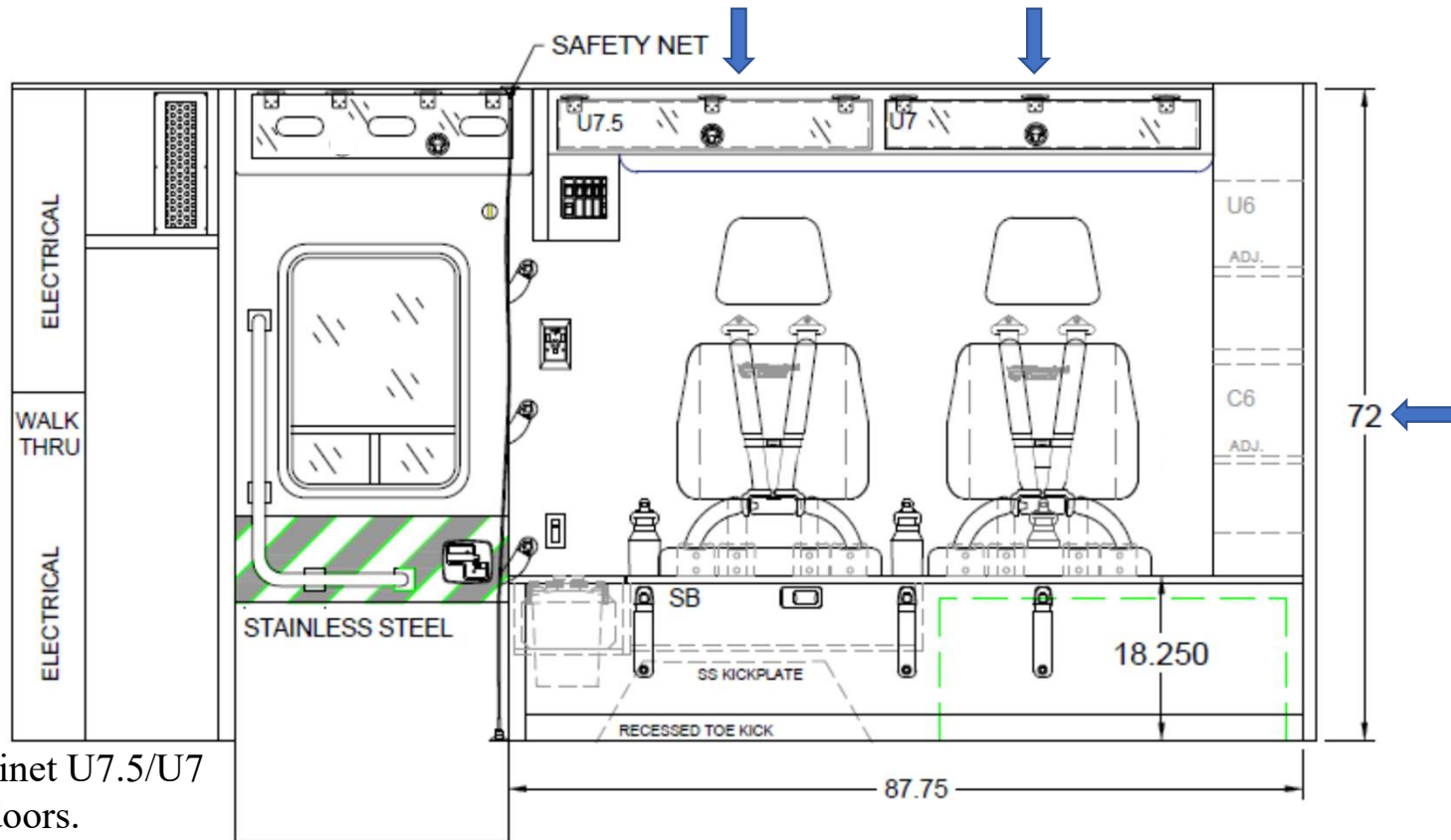
DATE: 1/20/21 SCALE:
DRAWN BY: AP CHECKED BY: 8 / 11

Citimedic



Curbside rear cabinet U6/C6 with dual OHO doors. Opt.

Citimedic



Curbside splint cabinet U7.5/U7 with flip up lexan doors. Opt with 72" headroom.

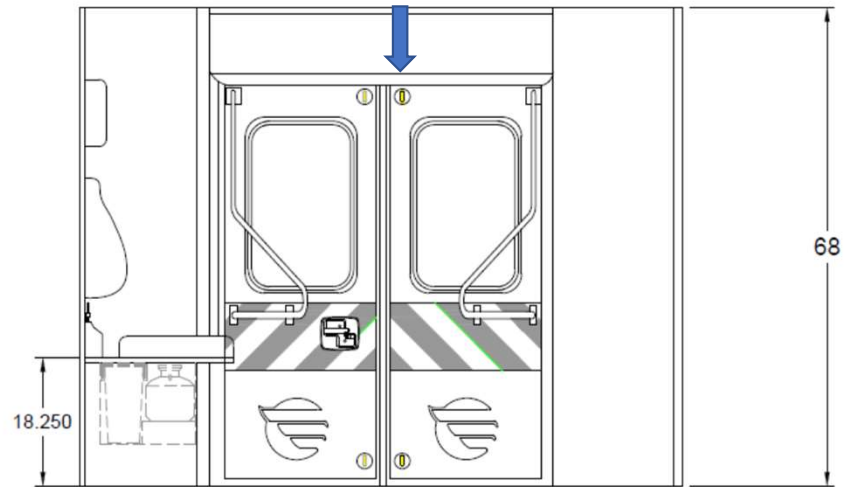
Citimedic

Push Button SafePass emergency release latch. Side and rear entry doors.

CA101242

MODEL 3148F CITIMEDIC

148 x 90 x 68



INTERIOR CABINET DIMENSIONS IN INCHES

COMPT.	HEIGHT	WIDTH	DEPTH
R1/R2	21.25	13.25	9.00

49" AISLE

BE ADVISED THAT THESE ARE PRELIMINARY LAYOUTS INTENDED TO ILLUSTRATE DESIGN INTENT AND DIMENSIONS ARE FOR REFERENCE ONLY PRIOR TO FINAL ENGINEERING



E-350 TYPE 3 FORD 2021

REAR BULKHEAD INTERIOR

DATE: 1/20/21 SCALE:

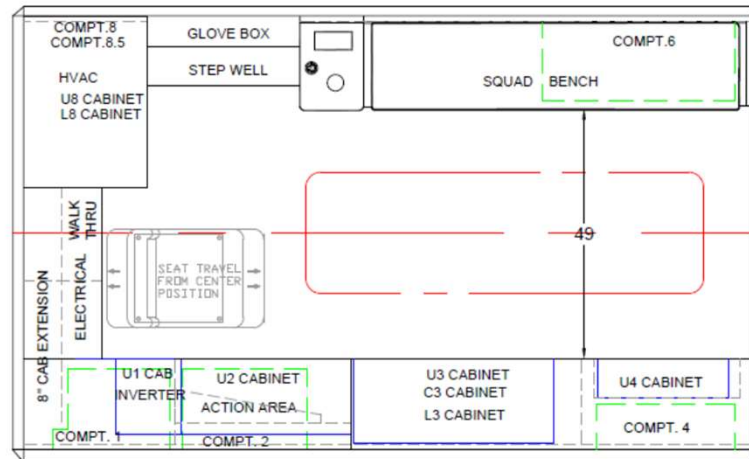
DRAWN BY: AP CHECKED BY: 9 / 11

Citimedic

CA101242

MODEL 3148F CITIMEDIC

148 x 90 x 68



BE ADVISED THAT THESE ARE PRELIMINARY LAYOUTS INTENDED TO ILLUSTRATE DESIGN INTENT AND DIMENSIONS ARE FOR REFERENCE ONLY PRIOR TO FINAL ENGINEERING

INTERIOR CABINET DIMENSIONS IN INCHES								
CABINET	HEIGHT	WIDTH	DEPTH	CABINET	HEIGHT	WIDTH	DEPTH	
								E-350 TYPE 3 FORD 2021 FLOOR PLAN
								DATE: 1/20/21 SCALE:
								DRAWN BY: AP REV NO: 10 11

49" AISLE

Citimedic

Six dual intensity LED dome lights.

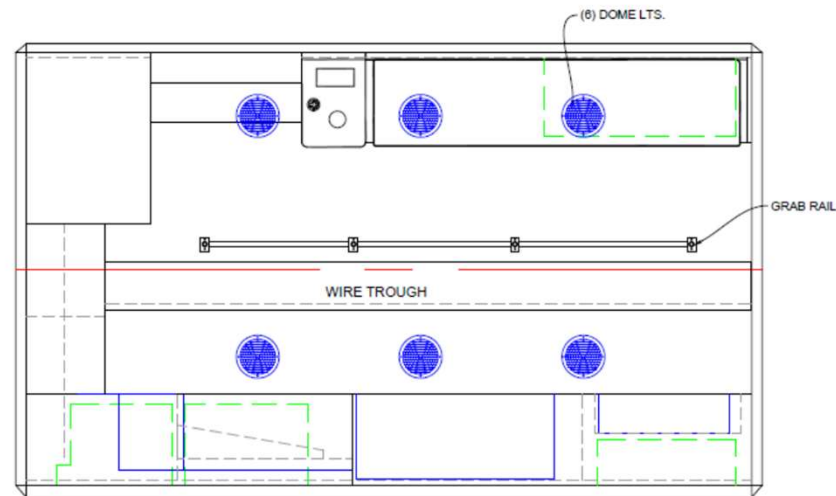
Yellow powder coated grab rail.

Hinged Wire Trough.

CA101242

MODEL 3148F CITIMEDIC

148 x 90 x 68



BE ADVISED THAT THESE ARE PRELIMINARY LAYOUTS INTENDED TO ILLUSTRATE DESIGN INTENT AND DIMENSIONS ARE FOR REFERENCE ONLY PRIOR TO FINAL ENGINEERING

INTERIOR CABINET DIMENSIONS IN INCHES									
CABINET	HEIGHT	WIDTH	DEPTH	CABINET	HEIGHT	WIDTH	DEPTH		
									E-350 TYPE 3 FORD 2021 LINER
									DATE: 1/20/21
									SCALE:
									DRN BY: AP
									DRG NO: 1111

49" AISLE

CA101339 MODEL 1148F 148 x 90 x 68

BE ADVISED THAT THESE ARE PRELIMINARY LAYOUTS INTENDED TO ILLUSTRATE DESIGN INTENT AND DIMENSIONS ARE FOR REFERENCE ONLY PRIOR TO FINAL ENGINEERING

EXTERIOR COMPARTMENT DIMENSIONS IN INCHES											
INTERIOR DIMENSIONS				JAMB OPENING		INTERIOR DIMENSIONS				JAMB OPENING	
COMPT.	HEIGHT	WIDTH	DEPTH	HEIGHT	WIDTH	COMPT.	HEIGHT	WIDTH	DEPTH	HEIGHT	WIDTH
1	61.00	20.00	15.00	60.50	18.00						
2	38.75	30.50	15.00	35.75	28.25						
4	82.50	26.75	8.00	77.75	23.50						

49" AISLE

Wheeled Coach
TYPE 1 FORD 2021
LEFT EXT. VIEW
DATE: 2/10/21 SCALE:
DESIGNED BY: AP REVISED: 2 / 11

CA101339 MODEL 1148F 148 x 90 x 68

BE ADVISED THAT THESE ARE PRELIMINARY LAYOUTS INTENDED TO ILLUSTRATE DESIGN INTENT AND DIMENSIONS ARE FOR REFERENCE ONLY PRIOR TO FINAL ENGINEERING

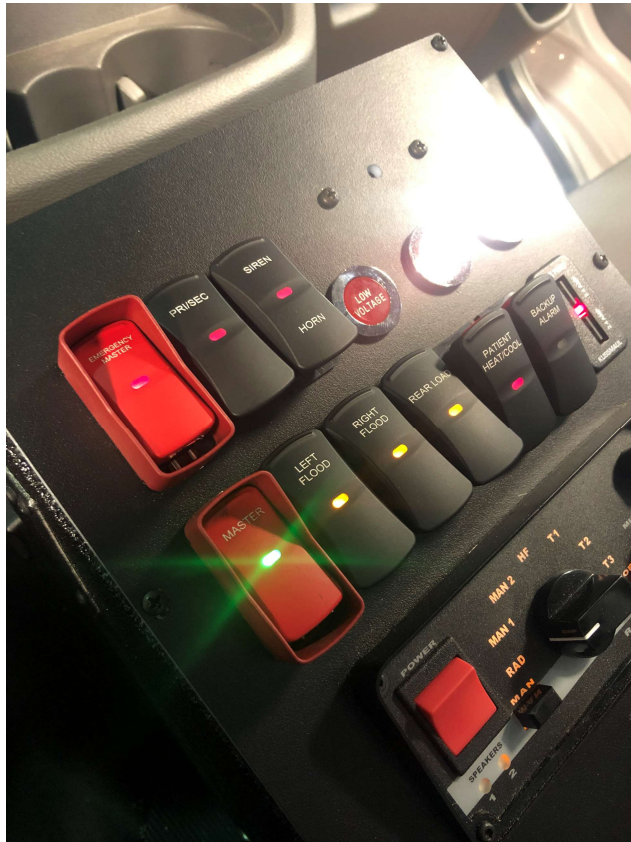
EXTERIOR COMPARTMENT DIMENSIONS IN INCHES											
INTERIOR DIMENSIONS				JAMB OPENING		INTERIOR DIMENSIONS				JAMB OPENING	
COMPT.	HEIGHT	WIDTH	DEPTH	HEIGHT	WIDTH	COMPT.	HEIGHT	WIDTH	DEPTH	HEIGHT	WIDTH
8				61.75	16.75						
8.5	15.50	19.00	18.75								
6	32.75	38.00	15.50	26.75	34.50						

49" AISLE

Wheeled Coach
TYPE 1 FORD 2021
RIGHT EXT. VIEW
DATE: 2/10/21 SCALE:
DESIGNED BY: AP REVISED: 3 / 11

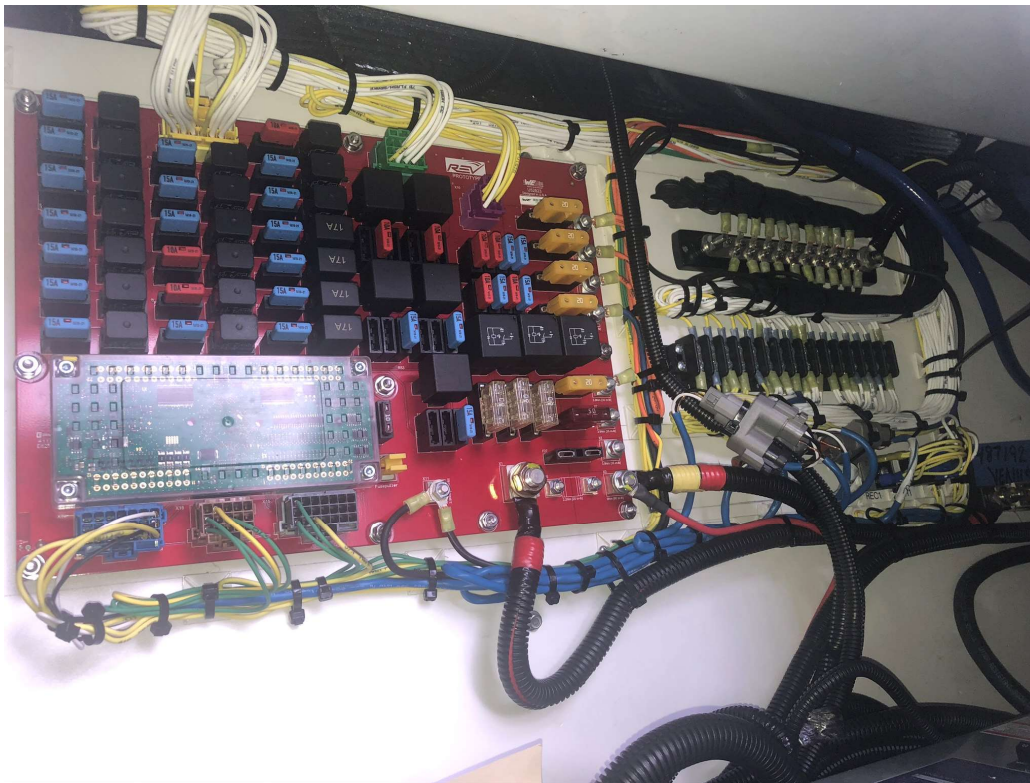
Ford F350 – Chevy 3500 – Dodge 3500

Citimedic



RelayPlex Electrical System

New Relay-Plex Electrical System



The Wurth Board design (Relay-Plex) is a programmable circuit board with basic automotive relays eliminating the need of all external relays and devices. The switches are Eaton CAN based switching that are programmed for functionality. Eliminating the wiring harnessing by using network wiring in-place of harnesses.



Click to edit master title style